

Adding a Lining to Laurelhurst Cardigan

By Straight Stitch Designs

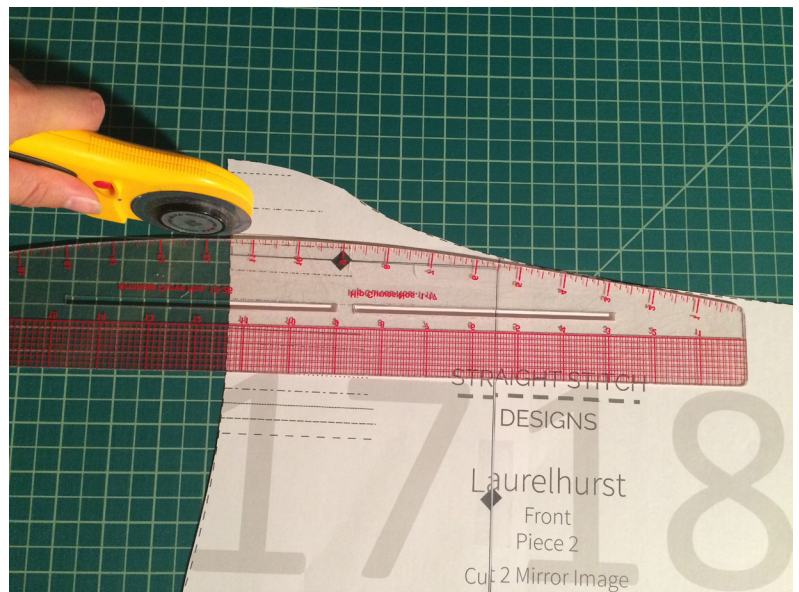
Tutorial by
Jenn Rossotti



To add a lining to your Laurelhurst you will need **DOUBLE THE AMOUNT** of fabric as the pattern calls for since you are essentially making two Laurelhursts and combining them together.

Begin by altering the front pattern piece as demonstrated here.

*This is the only necessary alteration to the original pattern pieces to complete this tutorial. Other changes have been made to this pattern piece (FRONT) for the personal fit reasons. You can see the full pattern piece in the photo on the bottom of this page. You do not **NEED** to make the same changes to add a lining.



It should look like this ---->

Cut the pattern pieces for the outer fabric as described in Laurelhurst pattern instructions. Cut the lining pieces with the following modifications:

- Add 3" of length to the Front and Back pattern pieces as shown.
- Add 1" of length to the sleeve pattern pieces.

*note - The front pattern piece has been altered on the left to for personal fit purposes. Do not worry if your pattern piece looks different. If using the unaltered original pattern piece, you will have a more square looking FRONT pattern piece. This is fine.



Sew side seams as described in the pattern instructions with the following exception. For ONE of the side seams for the lining ONLY, leave an opening in the seam that is approximately 6" long as shown in the photo to the right. Complete all other side seams as described in the pattern instructions.



Continue following Laurelhurst instructions for both the lining and the outer portion of your garment.

You will be omitting a portion of the instructions on page 6 where it says to, "Fold down the extra fabric on the top... and baste..."

*The extra portion is the bit of the pattern piece you cut off in the first step of this tutorial. You should not have any extra fabric to fold over. The line across the back of the neck should be straight as seen here --->



When finished you will basically have 2 Laurelhurst cardigans, with the lining being 3" longer than the outer.

Spread the lining of your Laurelhurst right side up. If you are using the original, unaltered pattern pieces this will look more like a rectangle. Lay your Laurelhurst outer on top of the lining with **RIGHT SIDES TOGETHER**.



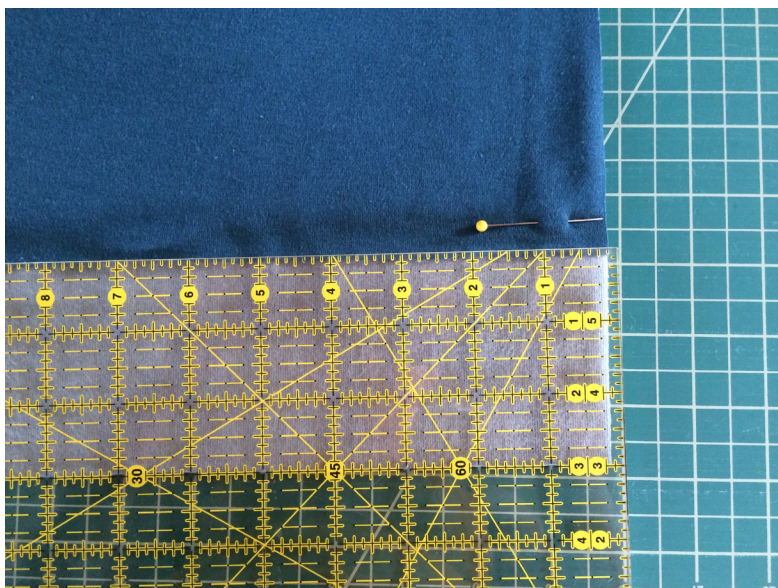
Match seams at the center neck and pin.



Working your way around the perimeter, match the raw edges and pin.



Make sure that you have 3” of lining extending beyond the outer fabric on both sides of the edge.



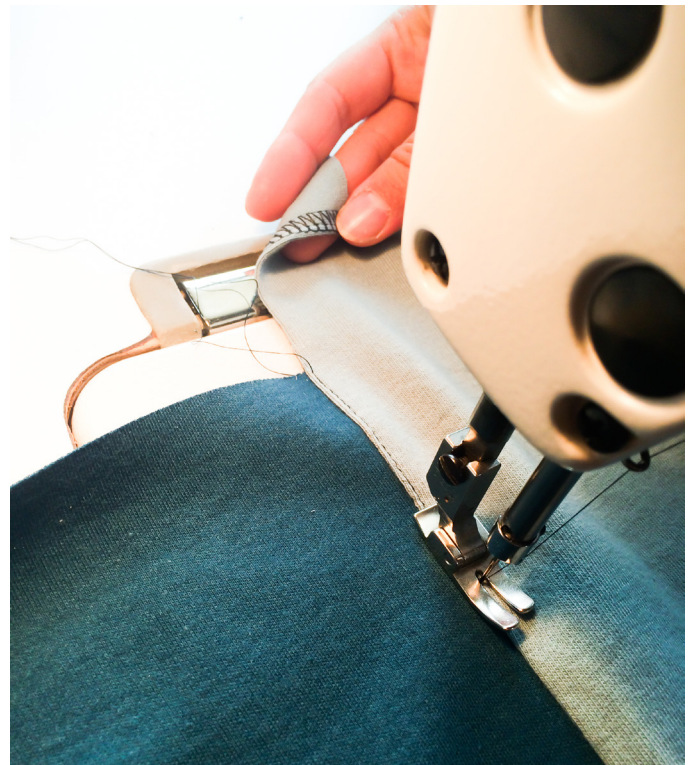
Stitch around the entire perimeter of the edge you just pinned.



Press seam toward the lining.



Understitch the seam you just made starting where the outer meets the lining and stopping at the same point on the other side. Do not stitch the lining portion that extends below the outer.



When finished understitching, press around the center front opening and neck portion (the seam you just made). The understitching will keep the lining in place so that it doesn't "migrate" around the seam to the outer part of the garment. At this point you may topstitch around the center front opening and collar if you desire.



At this point you may turn your garment right side out and insert the lining sleeves into the outer sleeves as shown in the photo to the right. Make sure the seams down the length of the sleeves are straight and that the lining is not twisted inside the garment. Pin the cuff as shown so that when you turn the garment out again the sleeve lining will stay in the correct orientation.





Slide your hand up BETWEEN the outer and the lining, then out through the sleeve.

Grabbing the cuff, pull it back through the bottom of the garment.



Keeping the sleeve seams in the same orientation as when you pinned them, pin the right sides of the cuff ends together, matching seams, and stitch the two sleeve ends together. Repeat for the other cuff.

*more photos on next page



Pin raw edges of the cuff, right sides together.



*Here is an alternative view.



Finished cuff seam.



Turn your sleeves right side out once more by pulling the lining sleeves back through the outer sleeve. Since your lining sleeve was 1" longer than the outer it should wrap around to the outside of the garment creating a nice looking contrast cuff but from the inside you will feel no seam at all. :-)



Now that you have completed the neckline and cuffs of your Laurelhurst, your garment should look like this, with only the bottom hem having a raw edge.

At this point you have the option to leave the hem raw as the original pattern describes if you choose.

*note - If you decide to leave the raw hem, the opening you left in the side seam of the lining at the beginning of this tutorial is no longer necessary. Simply go in through the bottom of the garment, close it up, and you're finished!

If you would like to close up the hem, continue on to the next steps.



Turn the garment inside out once again, bringing the right sides of the outer and lining hems together. You may keep the sleeves intact (with the lining inside the outer), but they will be on the inside of the garment and not visible for this step.



Fold up the hem of the lining, right sides together, so that it overlaps the edge of the outer hem by 1/4" and pin.



Stitch the lining as shown, being careful not to stitch the outer portion of the hem as seen in the photo on the right. Repeat for the other side.



Now join the raw edge of the lining hem with the raw edge of the outer hem and pin in place. Repeat for both sides, and along the entire length of the hem, making sure to match side seams.



*Side view of what it looks like when the raw edges are matched at the hem's edge. It may be helpful to pin the part you stitched in the previous step out of the way to ensure you don't accidentally sew it when you are completing the stitching on the hem.



Stitch along the entire hem, enclosing the raw edges.



Here is a view of what the hem's edge will look like after you have sewn the length of the hem.

At this point, as an optional step, you may go in through opening in the lining side seam and understitch the seam allowance. If you so choose, this time you will stitch it to the outer. (see two photos ahead for an example of the finished understitched hem.)



After understitching (if you chose to do that step) you will now reach in through the opening in the lining side seam and turn the garment back out for the last time. Carefully and gently pull the right side of your garment from the inside, to the outside, Now your hem is completely finished and there will be no exposed seams at all in your Laurelhurst.



Reaching in the side seam hole of the lining, turn out the points on the corners of the hem so they are nice and crisp. Press around the entire hem to set the seam and make a nice fold where the lining turns up to wrap to the outer portion of the garment.



Finally, using the handsewing method of your choice, close up the opening in the lining side seam.

You did it!!



Leave it open....



...Or add a belt.

